

THIS NEWSLETTER IS SUPPLIED ON THE UNDERSTANDING THAT IT IS FOR THE PERSONAL USE OF THE RECIPIENT FOR RESEARCH PURPOSES ONLY

EDITORIAL Distribution of OSN pages by PDF seems to have gone well with no problems reported, and I'm glad to say that more than half OSN subscribers now use this method. So, if you were/are in two minds about it, give it a try, you can always revert to the printed version, and if you do your PDF sub will credited to you.

Several PDF subscribers have asked why the first 2 pages, 1452-3, of OSN 48 appeared last. I should have explained earlier that they would not be sent until the printed version was finalised. This to allow the printed & PDF versions to be the same, and to allow any late items to be included.

Shorter NOTES, with thanks to all contributors.

1. **MÄRKLIN's Early Days** Urs Flammer sent a copy of a pink flyer that he found in a MÄRKLIN manual. Its date isn't certain, the manual was dated 21.3 but the logo on the flyer, right, is thought not to have been used until 1922. Urs' son Patrik kindly translated the flyer for me. It is headed 'MÄRKLIN instead of MECCANO' and starts by saying that the construction sets our company is currently producing under the trade name MECCANO will from now on be available as Metallbaukasten MÄRKLIN, and that all parts in the MÄRKLIN sets are compatible with Meccano parts and can be used in combination. It goes on to say that MÄRKLIN sets will contain a larger and better selection of parts and that is the reason for the change of name, 'to distinguish them from the old MECCANO sets'. Finally that Märklin vouches for the quality & versatility of new sets and that they are a purely German product with all the parts produced by 'German hands' in Märklin factories. And that all aspects of the product are Märklin's property and are covered by patents etc.



MÄRKLIN: S4

[48/1452]

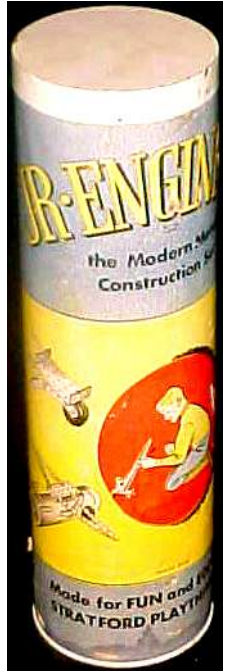
2. **Snippet. 'New' System: LA MECCANICA APPLICATA.** The manual below, said to be from the 1930s, was offered on Italian Ebay. As can be seen it carries a logo, 'MOGO'. I suppose it is for Set 4-5, and the model looks to be made from MECCANO-style parts.



LA MECCANICA APPLICATA: S1

[48/1452]

3. **Snippet. Another JR ENGINEER Set.** Unlike other known JR sets (see 43/1293 & earlier) this one is packed in a cannister (right), 9" high & 2½" Ø. The different parts which were shown with it are as those in the Special outfit (described in 33/976) but do not include the C/W Motor, the Disc, the Wheel Disc, the Perforated Plate, the Crank Handle, the Collar, & the 13mm Bolt. The Flanged Plate is not painted. One other part looks as if it might be a small gear wheel on a small diameter spindle: it could be part of a C/W motor, but it doesn't match any of the parts in the Motor in the Special set (see 33/976).



The quantities of the main parts shown were 1 Flanged Plate, 6 each of 5 & 12h Strips, 2 DAS, 2 Curved Strips, 4 at least of the A/B, 1 at least of each of the other 3 types of Bracket, 4 Road Wheels, 2 Axles, & a Screwdriver.

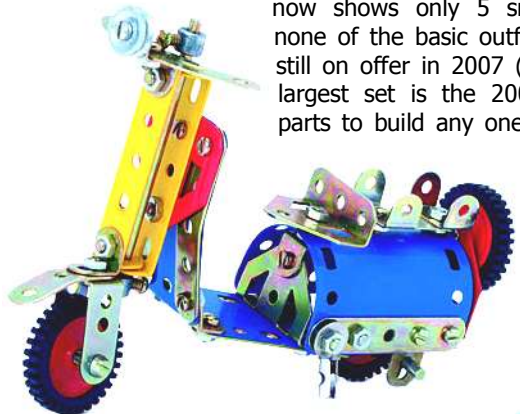
No manual was shown and the models on the cannister are not in either of the known manuals. The cannister itself was probably used in some of the models because it was said that 6 spots on it were marked 'punch here', and it could be seen that this had been done.

The maker of this set was Stratford Playthings Inc. and the 'indecipherable' name above 'Playthings Inc' of the front of the Special manual (see 43/1293) can now be seen to be 'Stratford'.

JR ENGINEER: S6

[48/1452]

4. **AMI-LAC Update** The firm's website, www.lacgiocattoli.it, now shows only 5 small sets with none of the basic outfits which were still on offer in 2007 (38/1151). The largest set is the 2000/1 with 219 parts to build any one of 5 vehicles, see 25/727.



Of the other sets, three, 107-109, were described in OSN 38, and the other, No. 106 with 127 parts, is for

another of the models that can be made from the 2000/1 outfit, the Scooter above. All 4 sets are packed in same type of plastic case shown right.

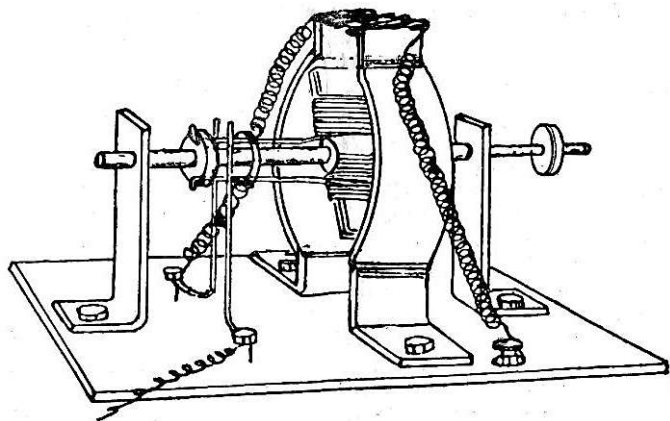
The same 3 models as in 2007 are shown as Novità but again with no indication as to whether there are sets for them.



AMI-LAC: S4

[48/1452]

5. **INNOR** Jean-Pierre Guibert kindly sent a copy of a new page recently added to his *Encyclopédie*. It gives details of a French set from the 1950s with 10 different parts to construct the simple 4-9v Electric Motor below. It is referred to in the



Instructions as the MOTEUR INNOR, but nothing is known of the maker. The base is the lid of the cardboard box (13*8*1.3cm), which has a plan view drawing of the Motor on it, but no name, and is perforated with holes to suit the parts. The Shaft is 2mm Ø reducing to 1.5mm at one end. The discs for the commutator are cardboard, the pulley brass, as also the 2mm Ø N&B. The Rotor had to be wound with 34 turns on each arm, & the Stator with 50. The paperwork in the Set consisted of a sheet printed on both sides with detailed building instructions and 2 other sheets, one with extra advice, the other about series & other motors, a permanent set-up for the Motor, and making a strobe disc to mount on the Motor.

INNOR: S1

[48/1453]

6. **MASTERBUILDER** In the account of this early post-WW2 UK system in 38/1135 it was mentioned that the meaning of the 'K.W.' in the name of the MASTERBUILDER company wasn't known. The answer is Kathleen Waddell, the wife of the Wardlaw Walter Waddell, the man who designed the system.

This information from Robin Waddell, Walter's son, who played with MASTERBUILDER as a small child in the 1946-50 period, and has recently been in touch. He added that Walter and his brother Alexander (Sandy) were joint owners of K.W. Products, the company based in Mountsorrel, just outside Loughborough, responsible for MASTERBUILDER.

And Robin wrote something of Walter's history. He combined considerable technical ability with a capacity for hard work, and he had a varied career. As an apprentice with Ruston & Hornsby in Lincoln he looked after the agricultural machinery, steam engines, etc which the company showed at fairs & exhibitions, and later, in the mid-1930s, he was sent to Trinidad as a support engineer for the equipment that Rustons had sold out there. Back in England he was involved in designing the tracks for the Centurion tank towards the end of WW2, and after the war he worked full-time for several companies as well as his involvement with MASTERBUILDER. Some years after that period he started another business, a direct mail bureau, initially called Miss Kay Blunt after his wife's maiden name, and later Powertyping. It used paper-tape technology to integrate addresses, letter text and personalised text inserts from three separate tape readers connected to

Flexowriter automatic typewriters - an awesome sight in operation. The letters were then signed with a genuine fountain pen by another automatic gadget.

MASTERBUILDER: S3

[48/1453]

7. **TRIX** Timothy Edwards passed on the address, www.trix-metaal.nl/Index.htm an excellent site with many photos of sets, motors, manuals, brochures, etc from Germany, France and several other countries.

TRIX: S7

[48/1453]

8. **'NEW' SYSTEMS** Jeannot Buteux/Constructorama wrote that it was hoped in due course to send some/more information about systems such as BOMISA, IMBRICA, MÉTAL-LUX, K.DO, STRUCTEX etc.

New OS Names: S2

[48/1453]

9. **Snippet: Canadian JUNEERO** A manual was described in 11/283 and now the set below, a 'Model A', has been seen on Canadian Ebay. It was said to have been produced from 1940 to 1948 by Steelmaster of Vancouver, and to have a British-made Tool plus aluminium & steel parts. The box is 18*12*2 1/2" and a sheet pasted inside the lid shows the 6 operations that the Tool can perform. The parts visible in the box include



a pair of Shears to the right of the 4 small brass Pulleys, a Die above the Tool's wooden Base, & to the right of the Tool's red handle, the Span'driver shown in OSN 11. Under the Manual is Sheet material with a Corrugated Sheet on top. There is no sign of the larger Pulleys & Flanged Wheels needed for some of the Manual models. But the ready availability of extra parts was stressed on the inside of the lid and in the Manual.

JUNEERO [2]: S1

[48/1453]

SMALL AD Wanted A manual, or a copy of one, for the German ELECTRIC Synchronos Uhr (Clock). Please contact Urs Flammer at urs.flammer@gmail.com.

OSN Subscription Rates, Printed Version The price per Issue, including postage is £6.50 for UK; £8 by air to Europe & surface anywhere; £9 by air outside Europe. **Back Issues** For the zones above : OSN 1: £1.50/£4/£5; OSN 2,3: £3.50/£5.50/£6.50 each; OSN 4-27: £5/£7/£8.50 each; OSN 28 on: £7/£8.50/£9.50. (All colour & some B&W issues are on loose sheets.) Postage at cost on multiple orders.

OSN Subscription Rate, PDF Version From No.48 onwards OSN is also available as PDF files sent to subscribers as they become available as email attachments. Their content is identical to the printed version. The cost is £5 per 2 Issues.

Payments Please make cheques etc payable to P.A.Knowles. Remittances must be in Pounds Sterling (GBP) or, as cash, in Euros or US Dollars (£1=€1.10=\$1.50). Payments from overseas may also be made using PayPal (in Sterling please).

Small Ads Short ads are free to subscribers (but repeats may not always be possible, please ask). Ads are sent by email to PDF subscribers.

SUBS: OSN Printed Version
Your Credit Balance:

was £ after OSN 47

was £ after your remittance of £

is £ after this Issue

Please send at least £ if you wish to receive the next Issue.

SUBS: OSN PDF Subscribers:

If needed you will be sent a renewal reminder by email.